

Blaupunkt-Werke GmbH, Hildesheim

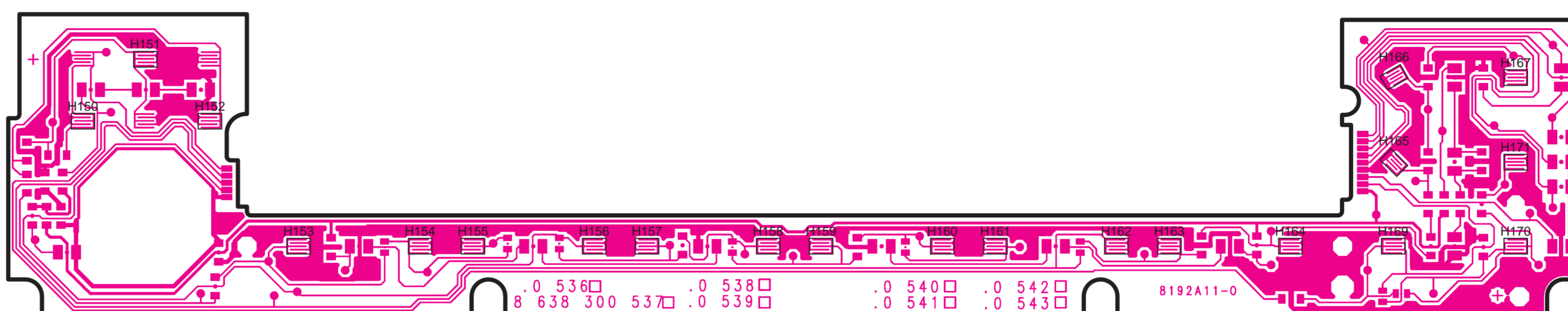
Gerätevariante E39	D150 D151 D152	D171	R164	R166	R167	R168	R169	R185	Best.Variante Platten-Nr.
AUDIO/DSP/UHR 7 609 260 040	entf.	entf.	22k	0	entf.	0	entf.	240	... 8224
AUDIO/DSP/TEL/UHR 7 609 261 040	LED	LED	22k	0	33k	0	entf.	entf.	... 8229
AUDIO/DSP/UHR/BC 7 609 262 040	entf.	entf.	22k	11k	entf.	entf.	0	240	... 8231
AUDIO/DSP/TEL/UHR/BC 7 609 263 040	LED	LED	22k	11k	22k	entf.	0	entf.	... 8192
AUDIO/UHR 7 609 264 040	entf.	entf.	0	0	entf.	0	entf.	240	... 8225
AUDIO/TEL/UHR/BC 7 609 265 040	LED	LED	0	11k	22k	entf.	0	entf.	... 8227
AUDIO/UHR/BC 7 609 266 040	entf.	entf.	0	11k	entf.	entf.	0	240	... 8233
AUDIO/TEL/UHR 7 609 267 040	LED	LED	0	0	33k	0	entf.	entf.	... 8235

* = Versionsabhängige Bestückung

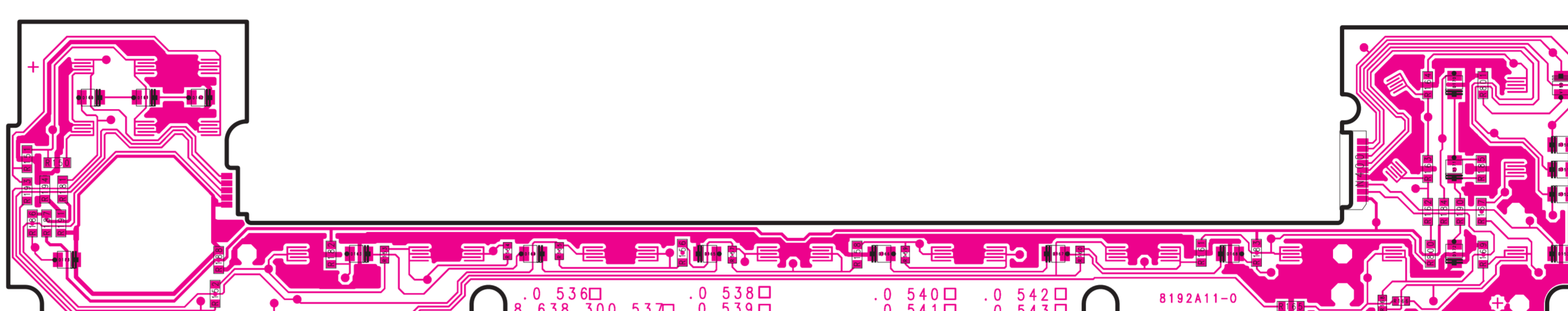
Gerätevariante E53	D150 D151 D152	D171	R164	R166	R167	R168	R169	R185	Best.Variante Platten-Nr.
AUDIO/BC 7 609 270 040	entf.	entf.	0	11k	entf.	entf.	0	240	... 8233
AUDIO/BC/TEL 7 609 271 040	LED	LED	0	11k	22k	entf.	0	entf.	... 8227
AUDIO/DSP/BC 7 609 272 040	entf.	entf.	22k	11k	entf.	entf.	0	240	... 8231
AUDIO/DSP/TEL/BC 7 609 273 040	LED	LED	22k	11k	22k	entf.	0	entf.	... 8192
AUDIO/UHR 7 609 274 040	entf.	entf.	0	0	entf.	0	entf.	240	... 8225
AUDIO/TEL/UHR 7 609 275 040	LED	LED	0	0	33k	0	entf.	entf.	... 8235
AUDIO/DSP/UHR 7 609 276 040	entf.	entf.	22k	0	entf.	0	entf.	240	... 8224
AUDIO/DSP/TEL/UHR 7 609 277 040	LED	LED	22k	0	33k	0	entf.	entf.	... 8229

* = Versionsabhängige Bestückung

Schalterplatte
Key board
PL 8192 A11



Schalterplatte
Key board
PL 8192 A11
Chip



BLAUPUNKT

BMW MID E39
Multi Informations Display

AUDIO/DSP/UHR
7 609 260 040

AUDIO/DSP/TEL/UHR
7 609 261 040

AUDIO/DSP/UHR/BC
7 609 262 040

AUDIO/DSP/TEL/UHR/BC
7 609 263 040

AUDIO/UHR
7 609 264 040

AUDIO/TEL/UHR/BC
7 609 265 040

AUDIO/UHR/BC
7 609 266 040

AUDIO/TEL/UHR
7 609 267 040

BMW MID E53
Multi Informations Display

AUDIO/BC
7 609 270 040

AUDIO/BC/TEL
7 609 271 040

AUDIO/DSP/BC
7 609 272 040

AUDIO/DSP/TEL/BC
7 609 273 040

AUDIO/UHR
7 609 274 040

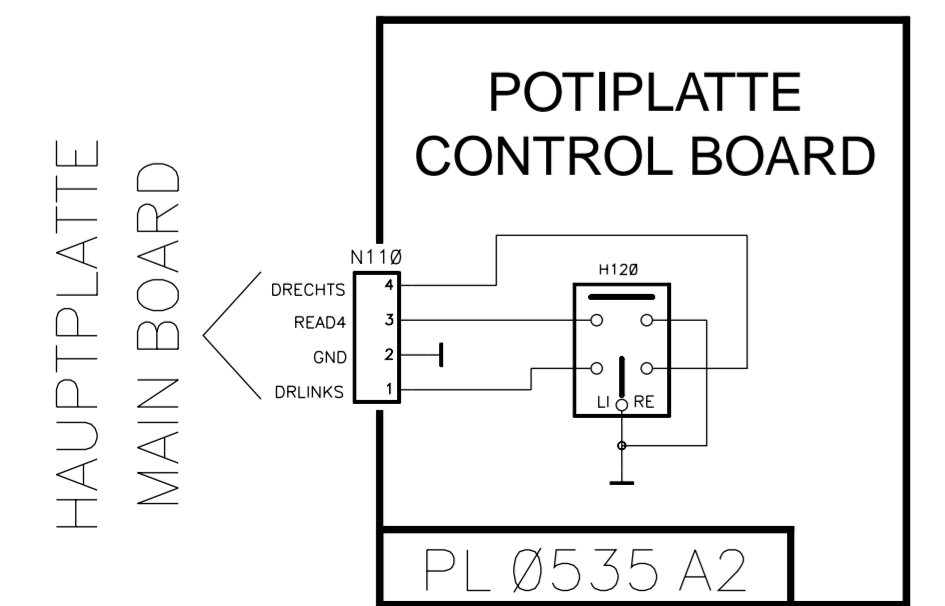
AUDIO/TEL/UHR
7 609 275 040

AUDIO/DSP/UHR
7 609 276 040

AUDIO/DSP/TEL/UHR
7 609 277 040

8 622 402 197 BN-WG 10/99

Schaltbild • Circuit diagram



Gerätevariante E39	R410 V410	R415 V415	R420 V420	Best.Variante Platten-Nr.
AUDIO/DSP/UHR 7 609 260 040	-	-	-	... 0784
AUDIO/DSP/TEL/UHR 7 609 261 040	X	X	X	... 0785
AUDIO/DSP/UHR/BC 7 609 262 040	-	-	-	... 0784
AUDIO/DSP/TEL/UHR/BC 7 609 263 040	X	X	X	... 0785
AUDIO/UHR 7 609 264 040	-	-	-	... 0784
AUDIO/TEL/UHR/BC 7 609 265 040	X	X	X	... 0785
AUDIO/UHR/BC 7 609 266 040	-	-	-	... 0784
AUDIO/TEL/UHR 7 609 267 040	X	X	X	... 0785

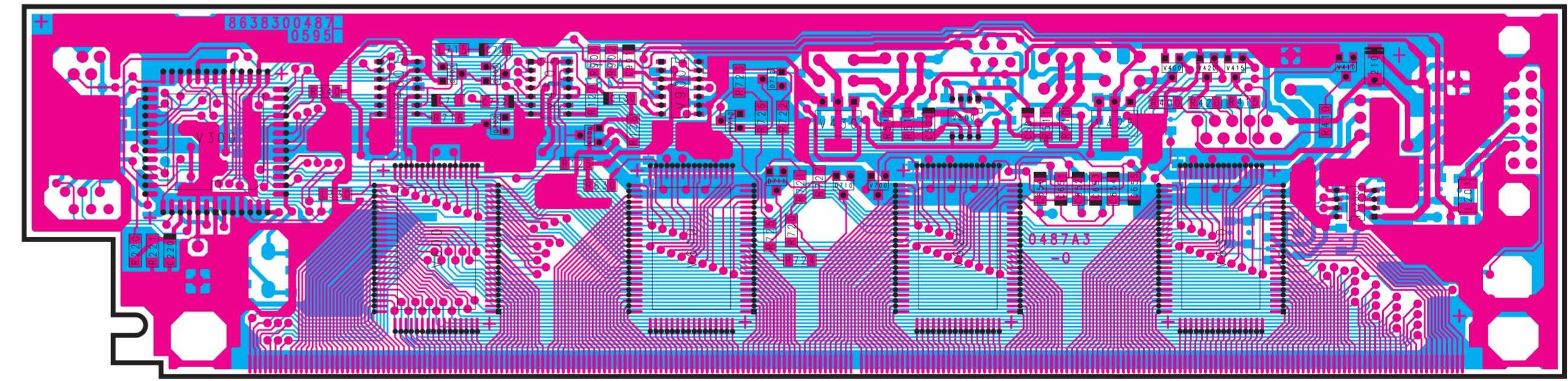
X = bestückt -- nicht bestückt

Gerätevariante E53	R410 V410	R415 V415	R420 V420	Best.Variante Platten-Nr.
AUDIO/BC 7 609 270 040	-	-	-	... 0595
AUDIO/BC/TEL 7 609 271 040	X	X	X	... 0487
AUDIO/DSP/BC 7 609 272 040	-	-	-	... 0595
AUDIO/DSP/TEL/BC 7 609 273 040	X	X	X	... 0487
AUDIO/UHR 7 609 274 040	-	-	-	... 0595
AUDIO/TEL/UHR 7 609 275 040	X	X	X	... 0487
AUDIO/DSP/UHR 7 609 276 040	-	-	-	... 0595
AUDIO/DSP/TEL/UHR 7 609 277 040	X	X	X	... 0487

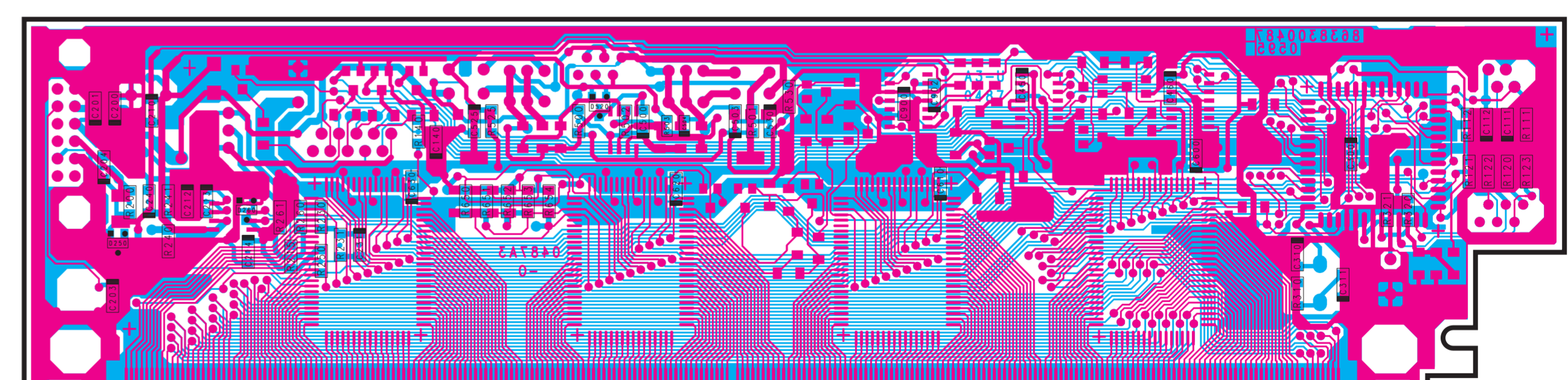
X = bestückt -- nicht bestückt



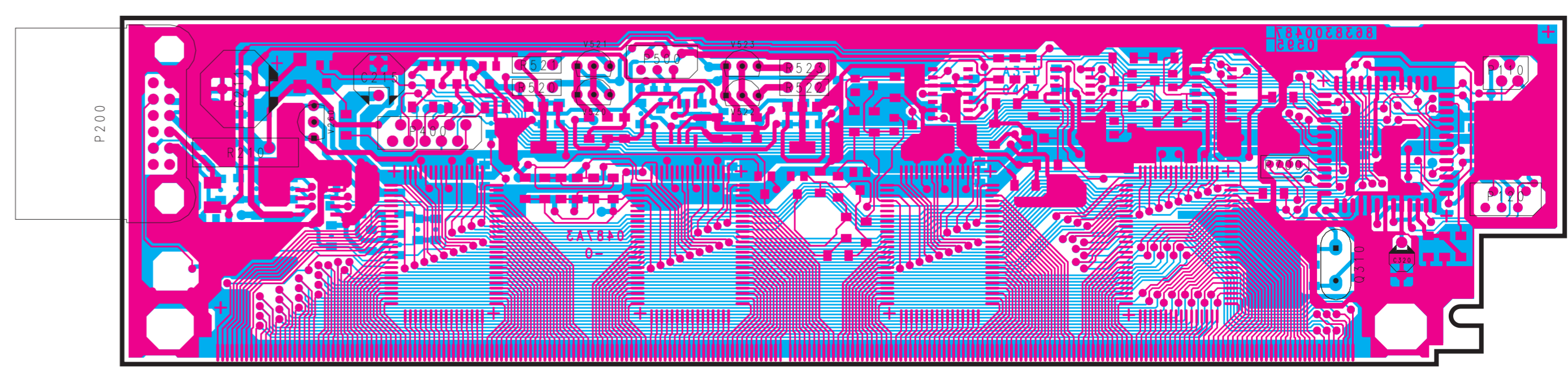
Hauptplatte
Main board
PL 0487 A03
Chip

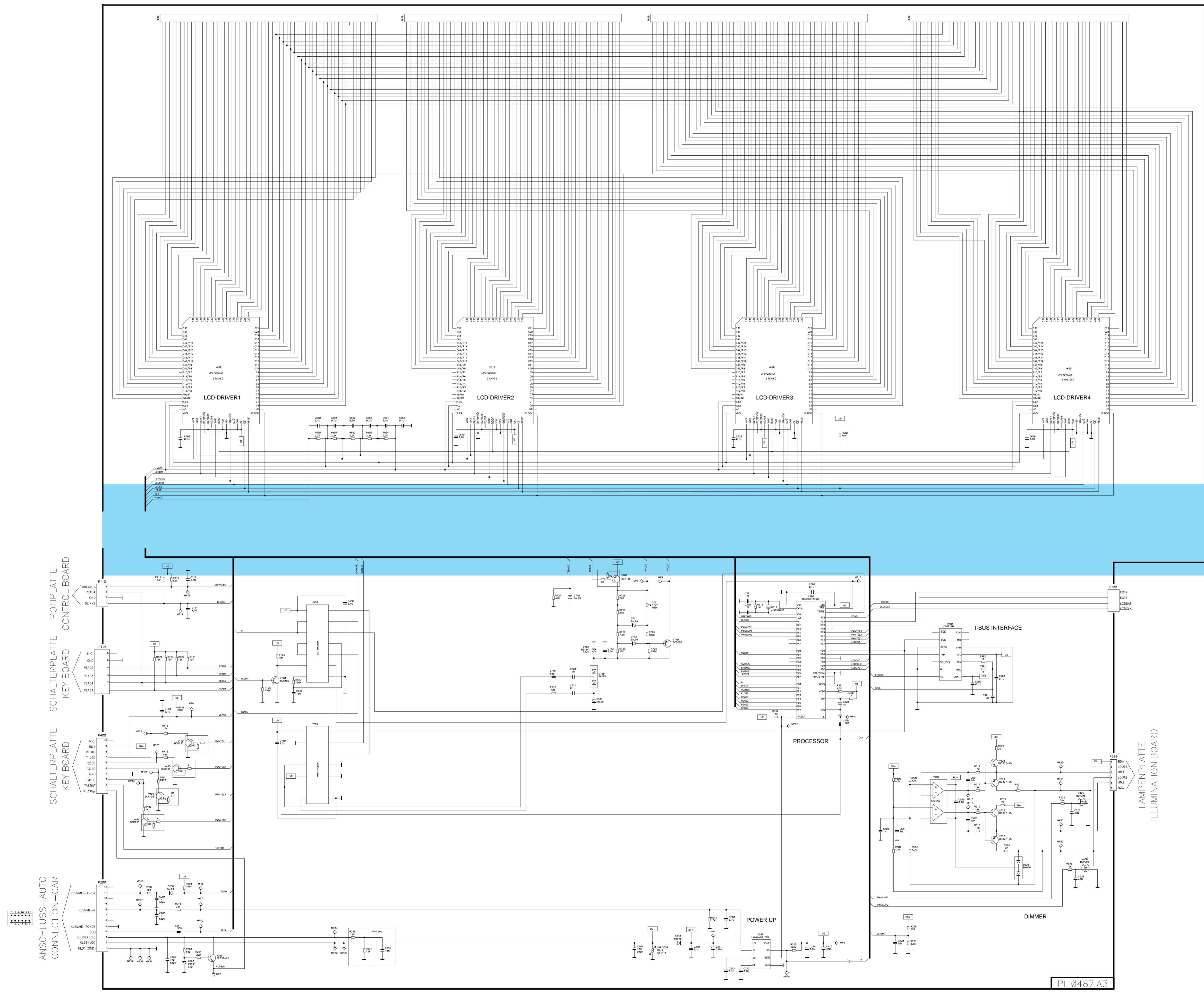


Hauptplatte
Main board
PL 0487 A03
Chip

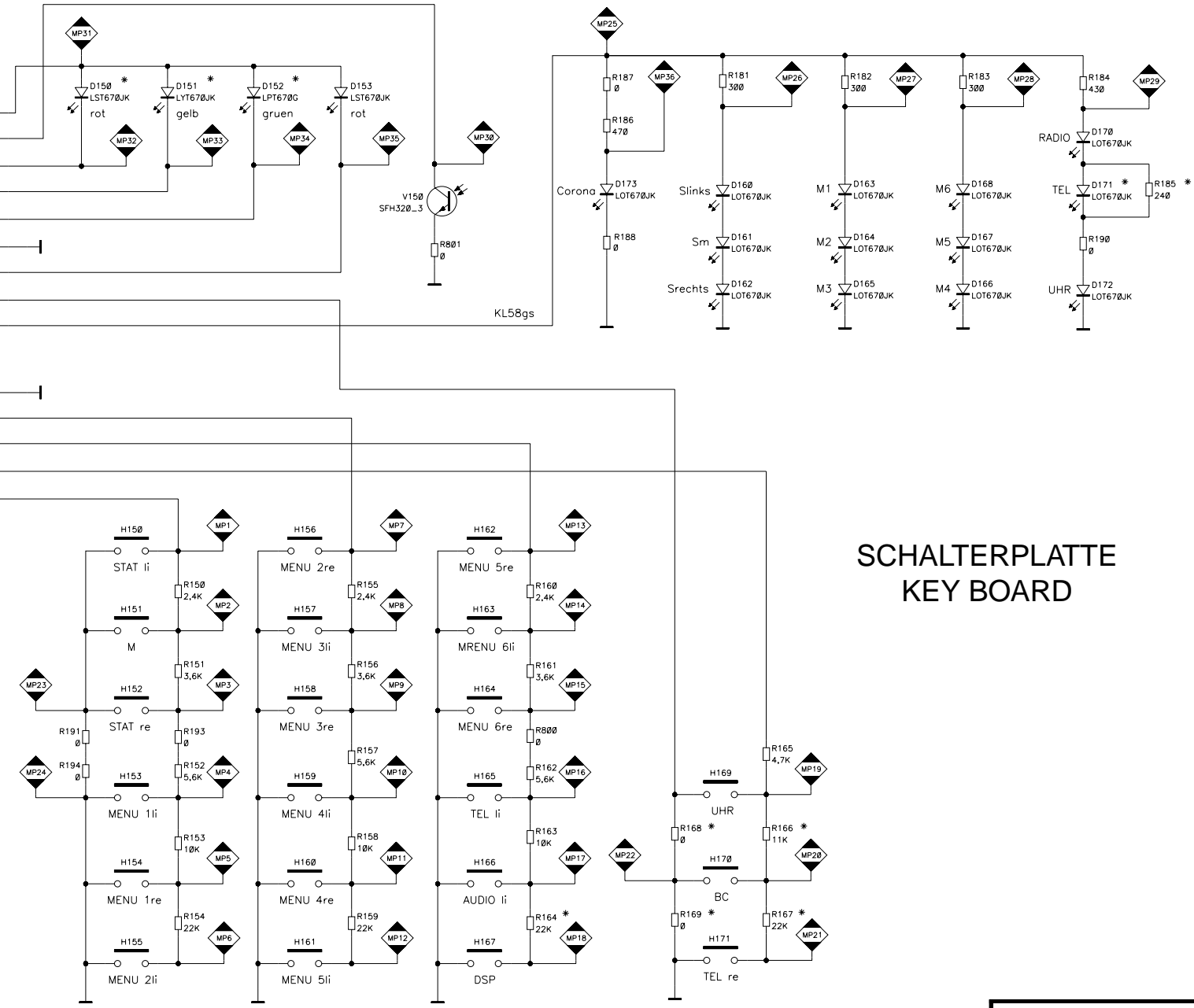
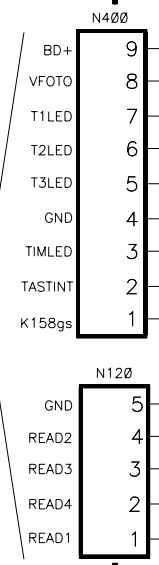


Hauptplatte
Main board
PL 0487 A03





HAUPTPLATTE
MAIN BOARD

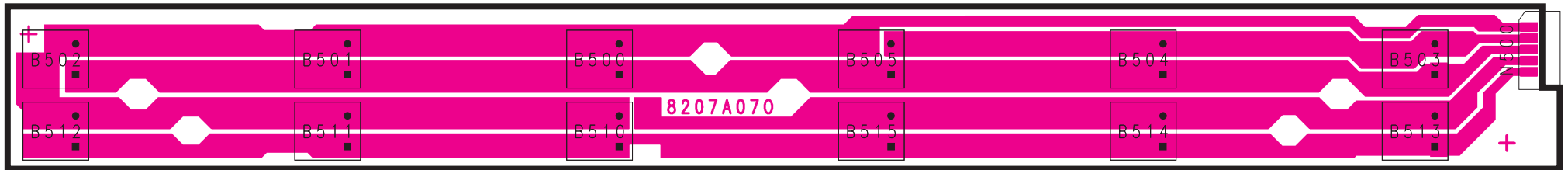


SCHALTERPLATTE
KEY BOARD

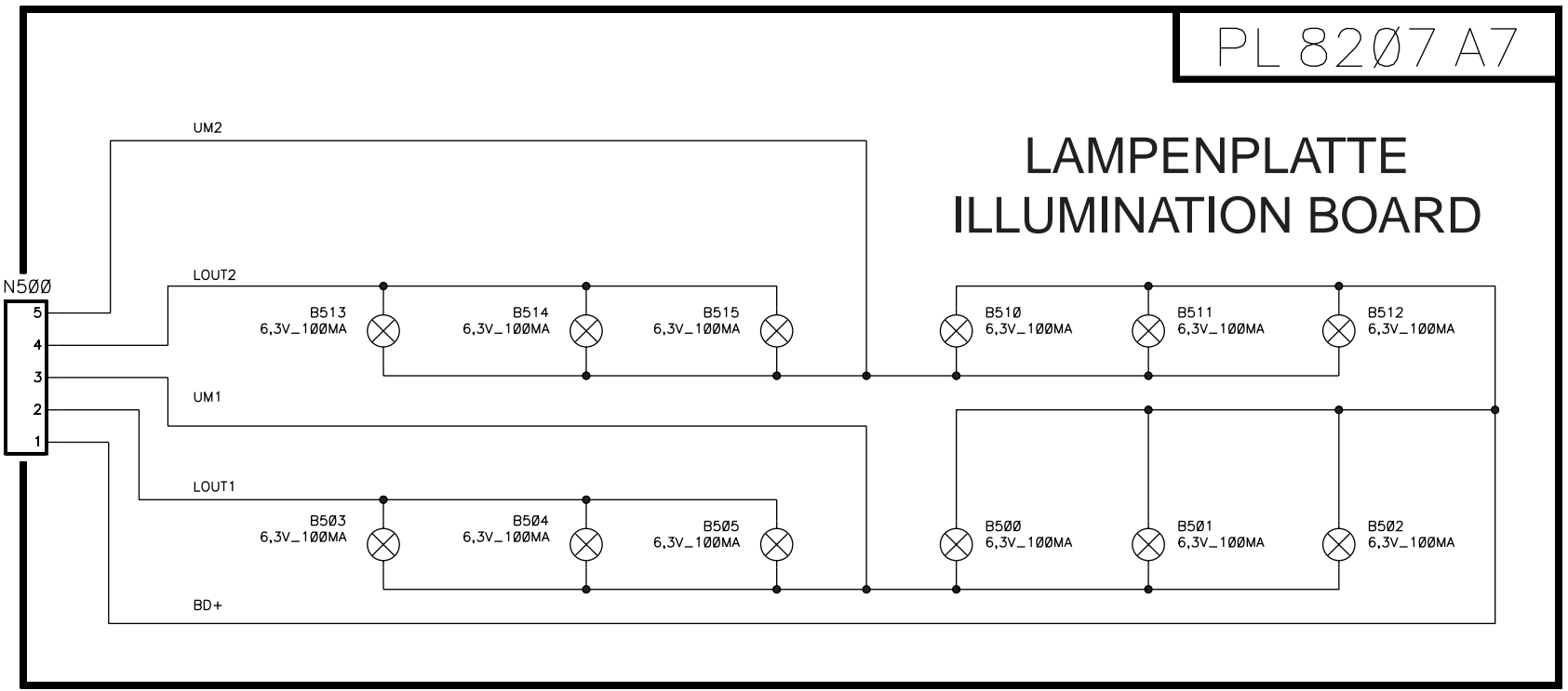
PL 8192 A11

zu Schaltbild BMW MID E39 / BMW MID E53 8 622 402 197

Lampenplatte
 Illumination board
 PL 8207 A07
 Chip



HAUPTPLATTE
 MAIN BOARD



PL 8207 A7